

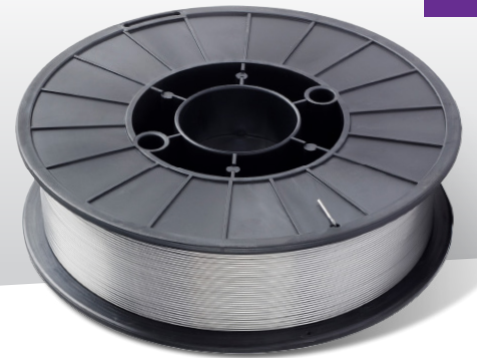
WESS GASLESS 71T-11

Flux Cored Welding Wire

W.E.S.S.

WELDING EQUIPMENT SALES & SERVICE

- **Self-shielded Flux Cored Wire**
- **All Positional Capabilities**
- **Smooth Stable Running Characteristics**
- **Ideal for the Welding of Thinner Section Mild and Galvanised Steels**



DESCRIPTION & APPLICATION:

WESS GASLESS 71T-11 Flux Cored Wire is a Premium Quality, Precision Layer Wound, all positional welding wire suitable for the welding of mild and coated steels. Its used in general industry for steel fabrication and particularly suited to outside general fabrication and maintenance repair. Note: This product is designed to be used with reverse polarity (DC Electrode Negative).

STORAGE:

To maintain in premium condition, product should be stacked on racks or pallets clear of the floor and walls in a heated, weather proof store area maintaining an ambient temperature of 25° C to a maximum of 40° Cand at a maximum humidity of 60% R.H. Avoid damp, wet areas.

CLASSIFICATION:

- AWS 5.20-E71T-11

TYPICAL WIRE ANALYSIS:

C: 0.30% Mn: 1.75% Si: 0.60%
S: 0.03% P: 0.03% Al: 1.80%

TYPICAL DIFFUSIBLE HYDROGEN LEVELS TO AS3752:

15.0 - 20.0 mls of hydrogen / 100 gms of deposited weld metal.

TYPICAL ALL WELD METAL MECHANICAL PROPERTIES:

Yield Stress 390 MPa
Tensile Strength 490 to 670 MPa
Elongation 20%

PACKAGING:

Part No.	Description	Spool	Diameter (mm)
71T110809	WESS GASLESS 71T-11 Flux Cored Wire	0.9 kg	0.8
71T110909	WESS GASLESS 71T-11 Flux Cored Wire	0.9 kg	0.9
71T110805	WESS GASLESS 71T-11 Flux Cored Wire	5 kg	0.8
71T110905	WESS GASLESS 71T-11 Flux Cored Wire	5 kg	0.9
71T111205	WESS GASLESS 71T-11 Flux Cored Wire	5 kg	1.2
71T111215	WESS GASLESS 71T-11 Flux Cored Wire	15 kg	1.2